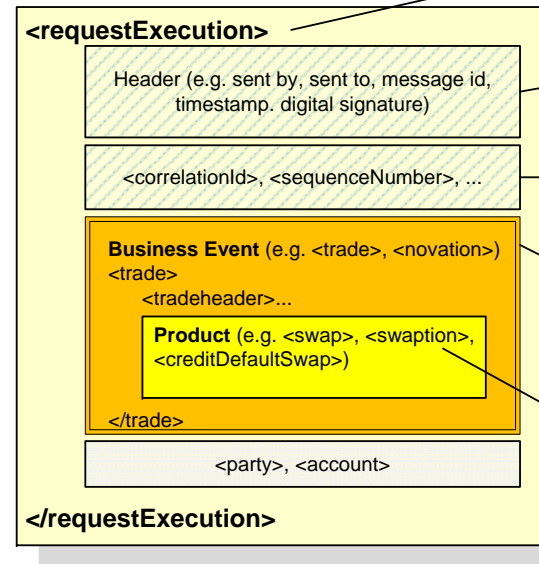


Structure of a typical FpML message:



FpML root element. There are many root elements defined in FpML for the different message types and business processes. (see *Business Processes* below for full list)

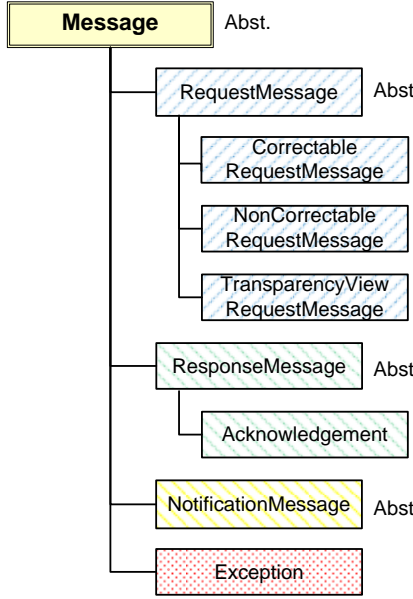
The **header** contains standard envelope information used for electronic messaging. Envelope fields vary depending on the base message type

Additional fields for **message correlation** i.e., linking successive messages together (response, correction, retraction)

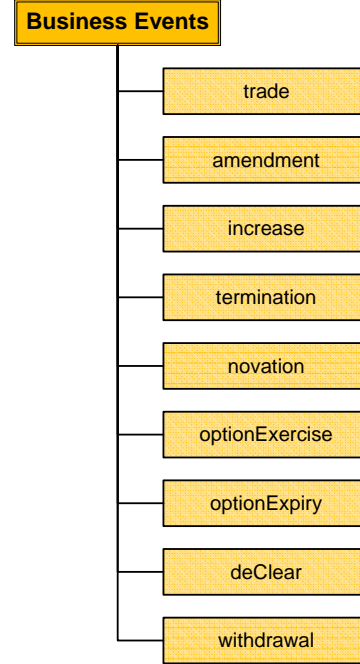
The **payload** of the message is determined by choosing one business event (e.g., trade, increase, termination) (each business event has a different content model)

A **product** can be specified as part of the event. Products are defined for the different asset classes (e.g., IRD, CD, FX) (see *Products Framework* for full list) Product representation can be looser or tighter depending on the view (e.g., Confirmation, Reporting)

Anatomy of an FpML Message (e.g., requestExecution)



Base Message Types
All messages are extending one of the above base message types



Business Events
Allows a choice between a trade and a post trade event (see Events.model)

Legend:

- Business Event (Yellow box)
- Business Process (Green box)
- View (White box with red border)
- messageName (e.g. requestExecution) - FpML message - can be used as name of FpML root element e.g. <requestExecution>
- RequestMessage (Blue box) - Base Request Message Type
- ResponseMessage (Blue box) - Base Response Message Type
- NotificationMessage (Blue box) - Base Notification Message
- Exception (Red box) - Base Exception Message Type
- AbstractMessage (Yellow box with 'Abst.') - Abstract Type
- BaseMessage (White box) - ExtendedMessage is extending base type BaseMessage

Business Processes Business processes are organized under 4 views:

